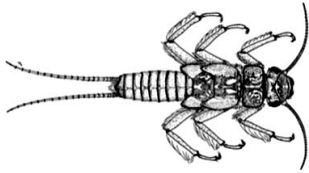


Make one set of business size cards for each small student group. If you make each group of cards a different color, it will be easier to separate mixed up groups. If you want to reuse the cards over the school day or in multiple years consider using card stock. Macro-invertebrates are cards 1-16, other organisms are cards 17-26, and cards for the optional size activity are 27-33.

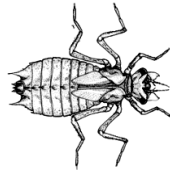
Make one set of 4"x4" classroom cards for use on the printed or projected posters. Consider using magnetic paper (e.g. Avery® Magnet Sheets 3270, 8-1/2" x 11", White, Pack of 5) to make board work easier.

Stoneflies  
(Order Plecoptera)



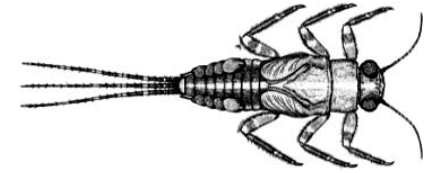
1

Dragonflies and Damselflies  
(Order Odonata)



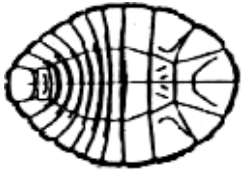
2

Mayflies  
(Order Ephemeroptera)



3

Water Beetles  
(Order Coleoptera)



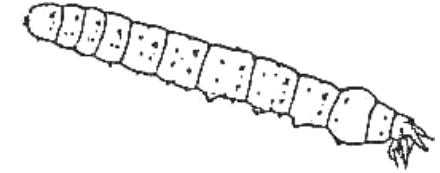
4

True Flies  
(Order Diptera; adult has 6 legs)



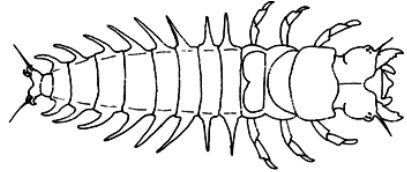
5

Crane Flies  
(Order Diptera; adult has 6 legs)



6

Dobsonflies and Alderflies  
(Order Megaloptera)



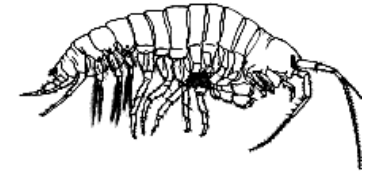
7

Caddisflies  
(Order Trichoptera)



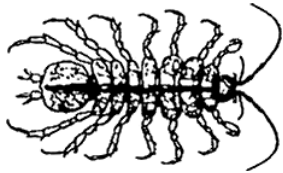
8

Scuds  
(Order Amphipoda)



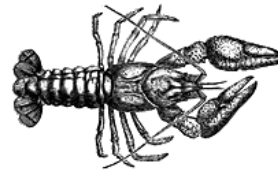
9

Sowbugs  
(Order Isopoda)



10

Crayfish  
(Order Decapoda)



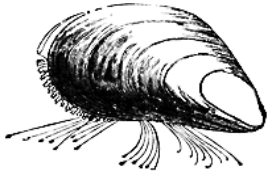
11

Snails  
(Class Gastropoda)



12

Clams and Mussels  
(Class Bivalvia)



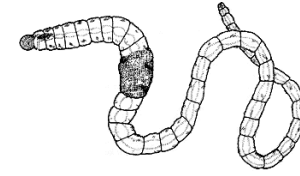
13

Leeches  
(Subclass Hirudineae)



14

Aquatic Earthworms  
(Subclass Oligochaeta)



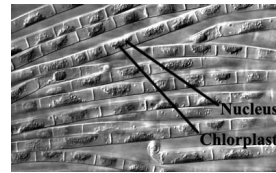
15

Planaria  
(Class Turbellaria)



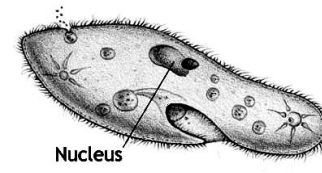
16

Pond Scum  
(Filamentous Green Algae)



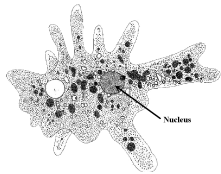
17

Paramecium



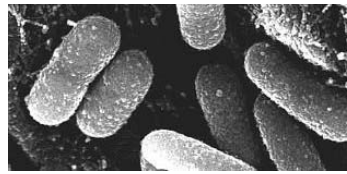
18

Amoeba



19

Bacteria



20

White Pine Tree



21

Oak Tree



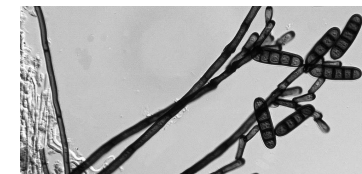
22

Oak Leaf



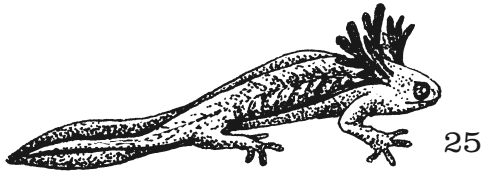
23

Fungus



24

Salamander



25

Trout



26

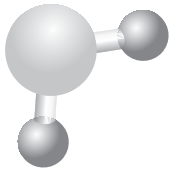
Forest



27

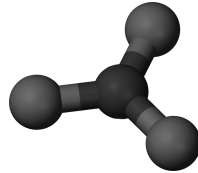
—

Water Molecule



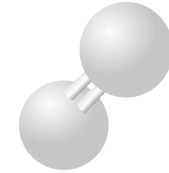
28

Nitrate



29

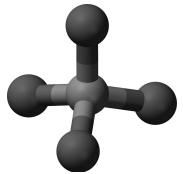
Oxygen



30

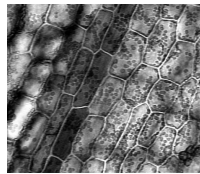
—

Phosphate



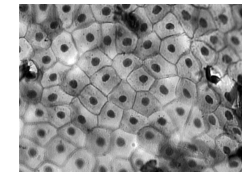
31

Plant Cells



32

Animal Cells



33

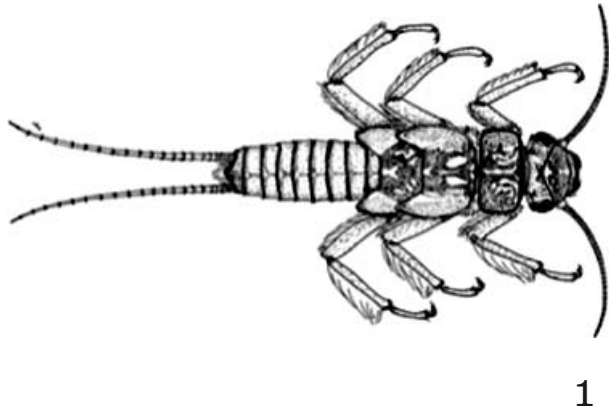
—

|

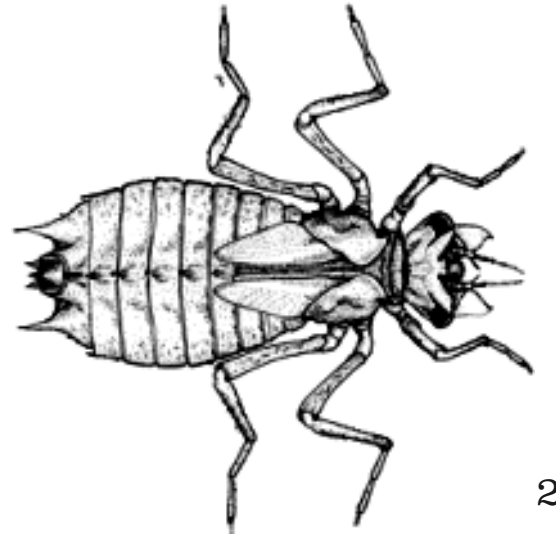
|

|

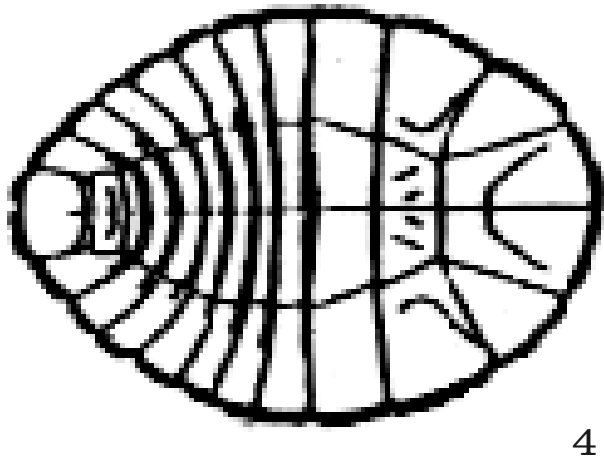
Stoneflies  
(Order Plecoptera)



Dragonflies and Damselflies  
(Order Odonata)



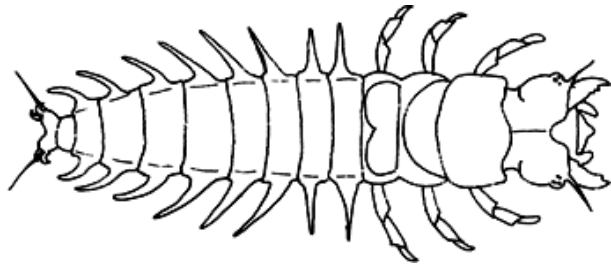
Water Beetles  
(Order Coleoptera)



True Flies  
(Order Diptera; adult has 6 legs)

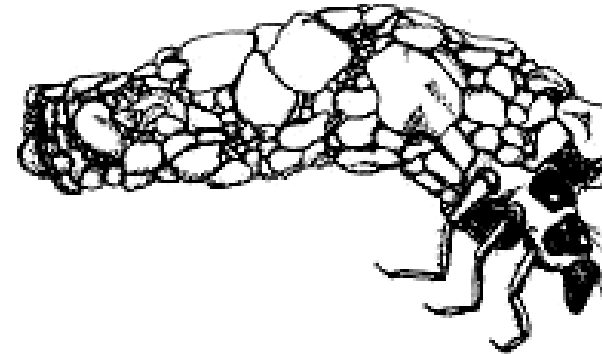


Dobsonflies and Alderflies  
(Order Megaloptera)



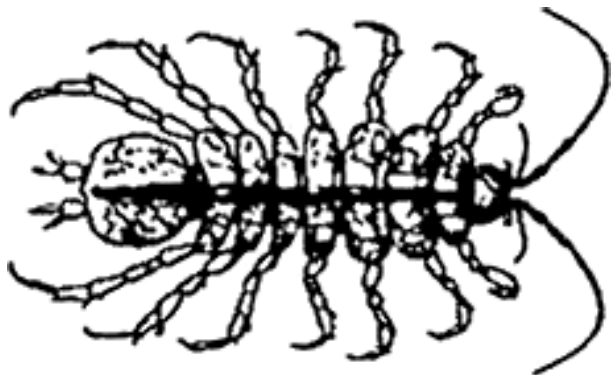
7

Caddisflies  
(Order Trichoptera)



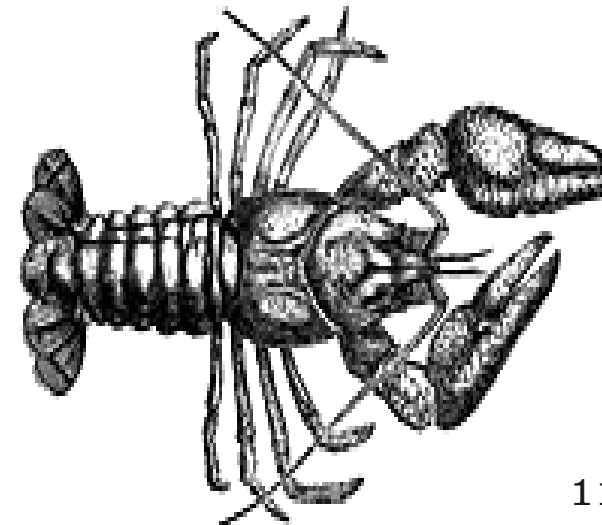
8

Sowbugs  
(Order Isopoda)



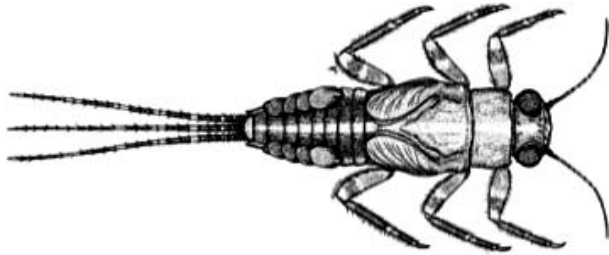
10

Crayfish  
(Order Decapoda)



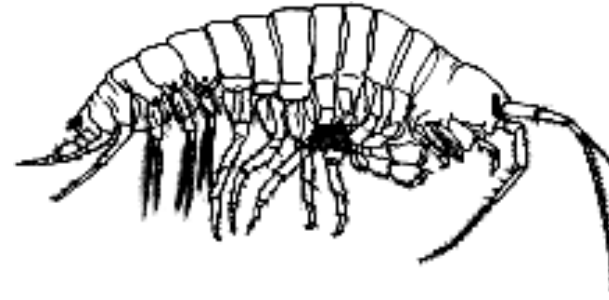
11

Mayflies  
(Order Ephemeroptera)



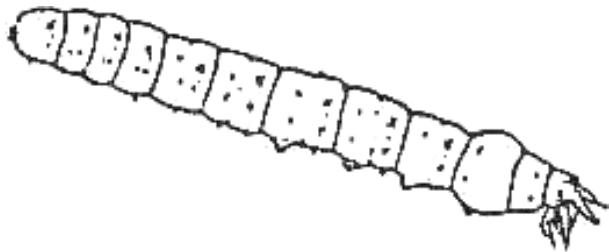
3

Scuds  
(Order Amphipoda)



9

Crane Flies  
(Order Diptera; adult has 6 legs)



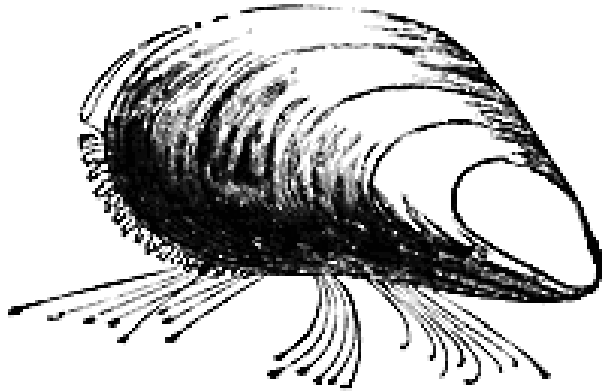
6

Snails  
(Class Gastropoda)



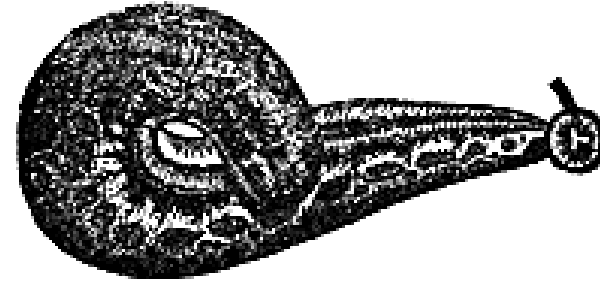
12

Clams and Mussels  
(Class Bivalvia)



13

Leeches  
(Subclass Hirudinea)



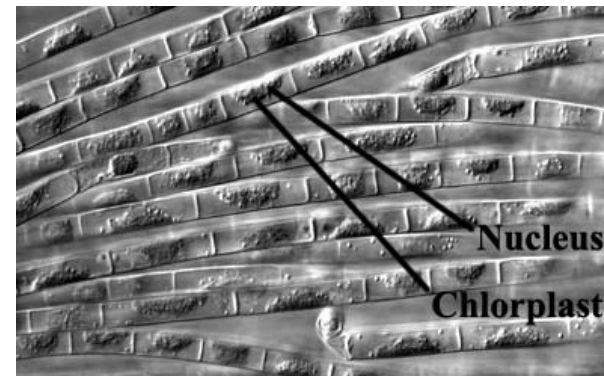
14

Planaria  
(Class Turbellaria)



16

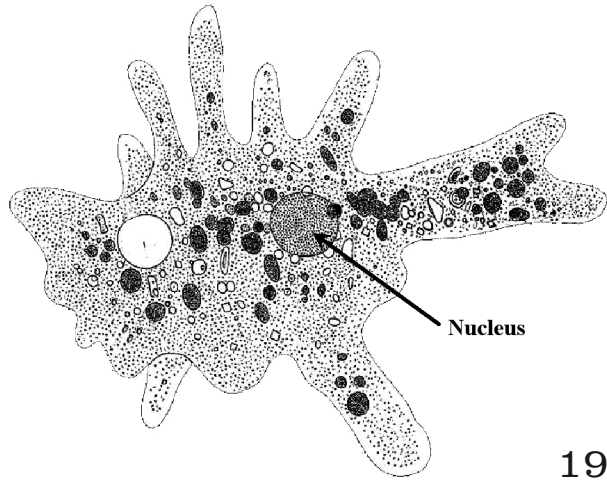
Pond Scum  
(Filamentous Green Algae)



17

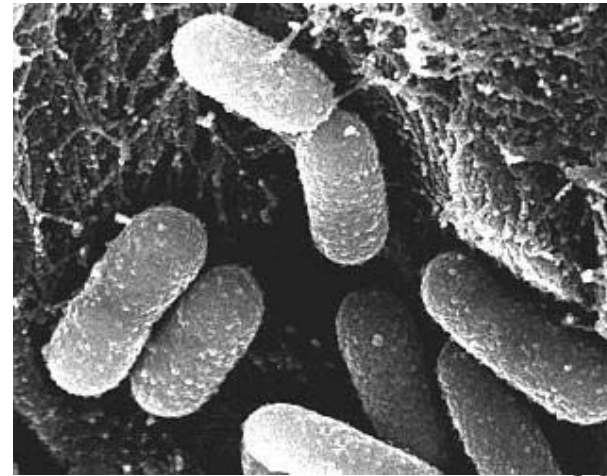


Amoeba



19

Bacteria



20

Oak Tree



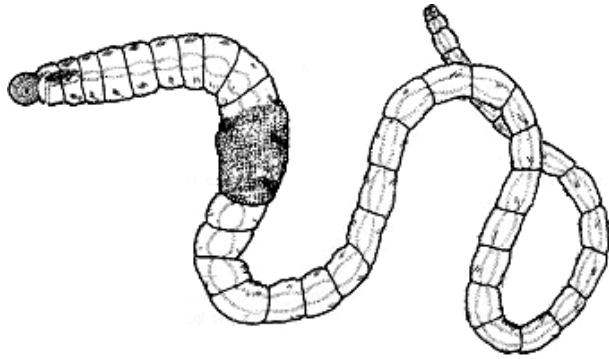
22

Oak Leaf



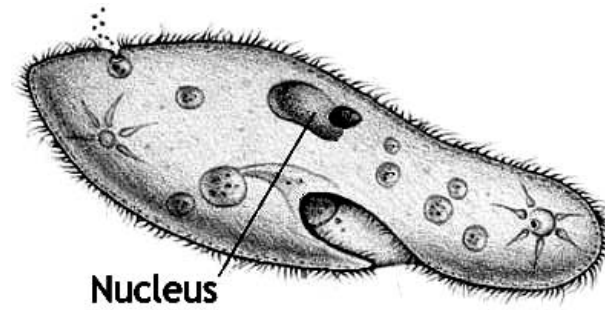
23

Aquatic Earthworms  
(Subclass Oligochaeta)



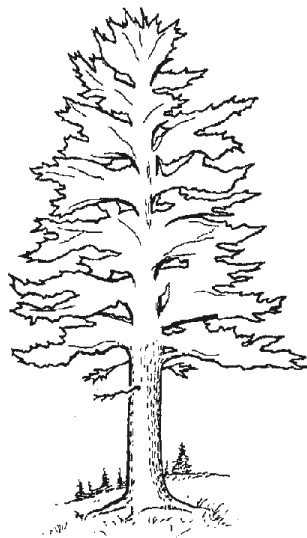
15

Paramecium



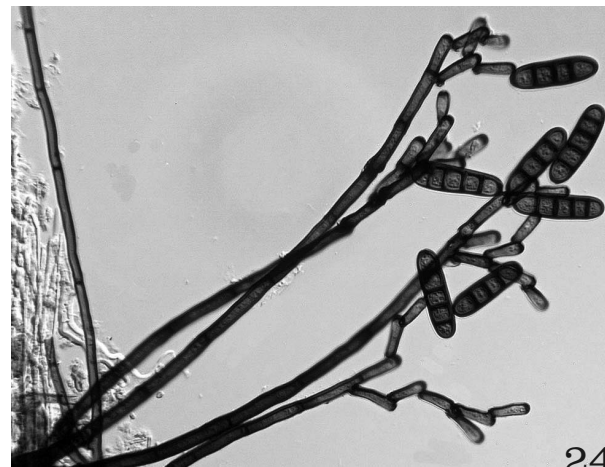
18

White Pine Tree



21

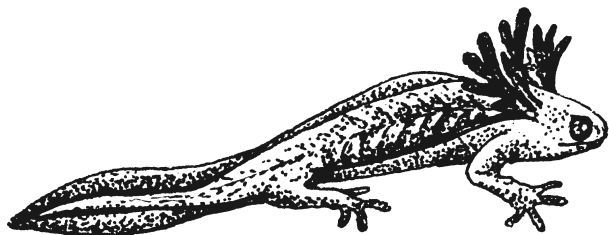
Fungus



24

---

Salamander



25

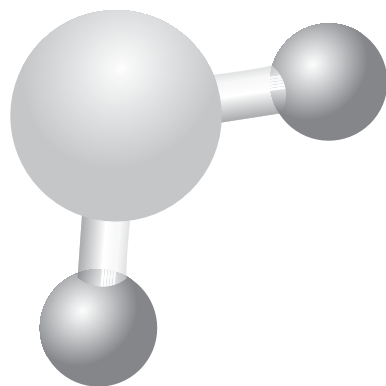
Trout



26

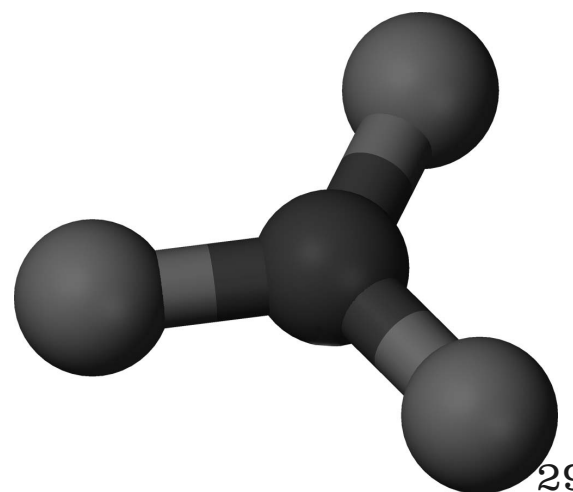
---

Water Molecule



28

Nitrate



29

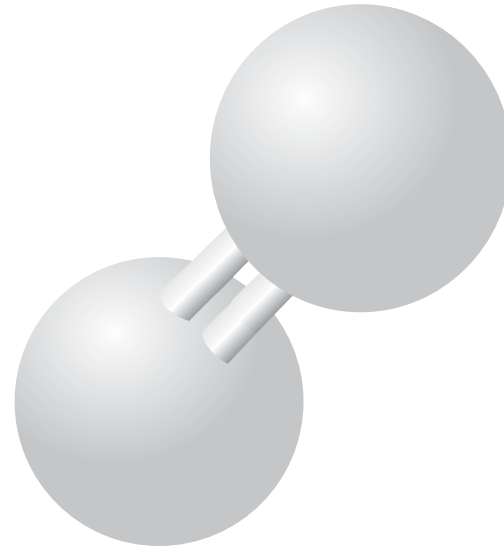
---

Forest



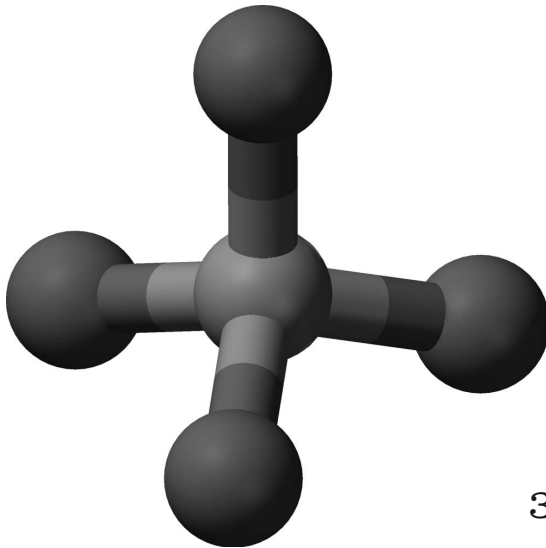
27

Oxygen



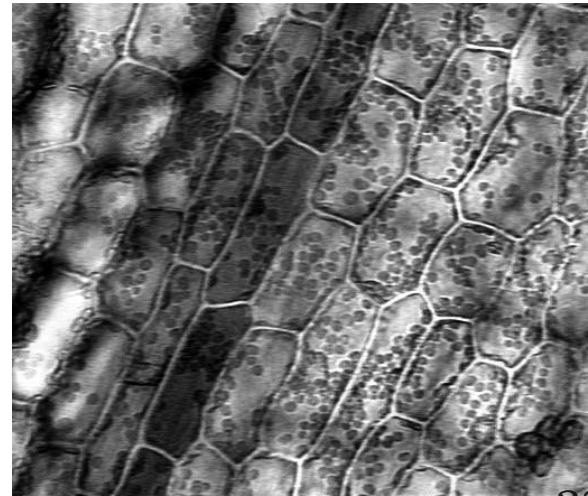
30

Phosphate



31

Plant Cells



32